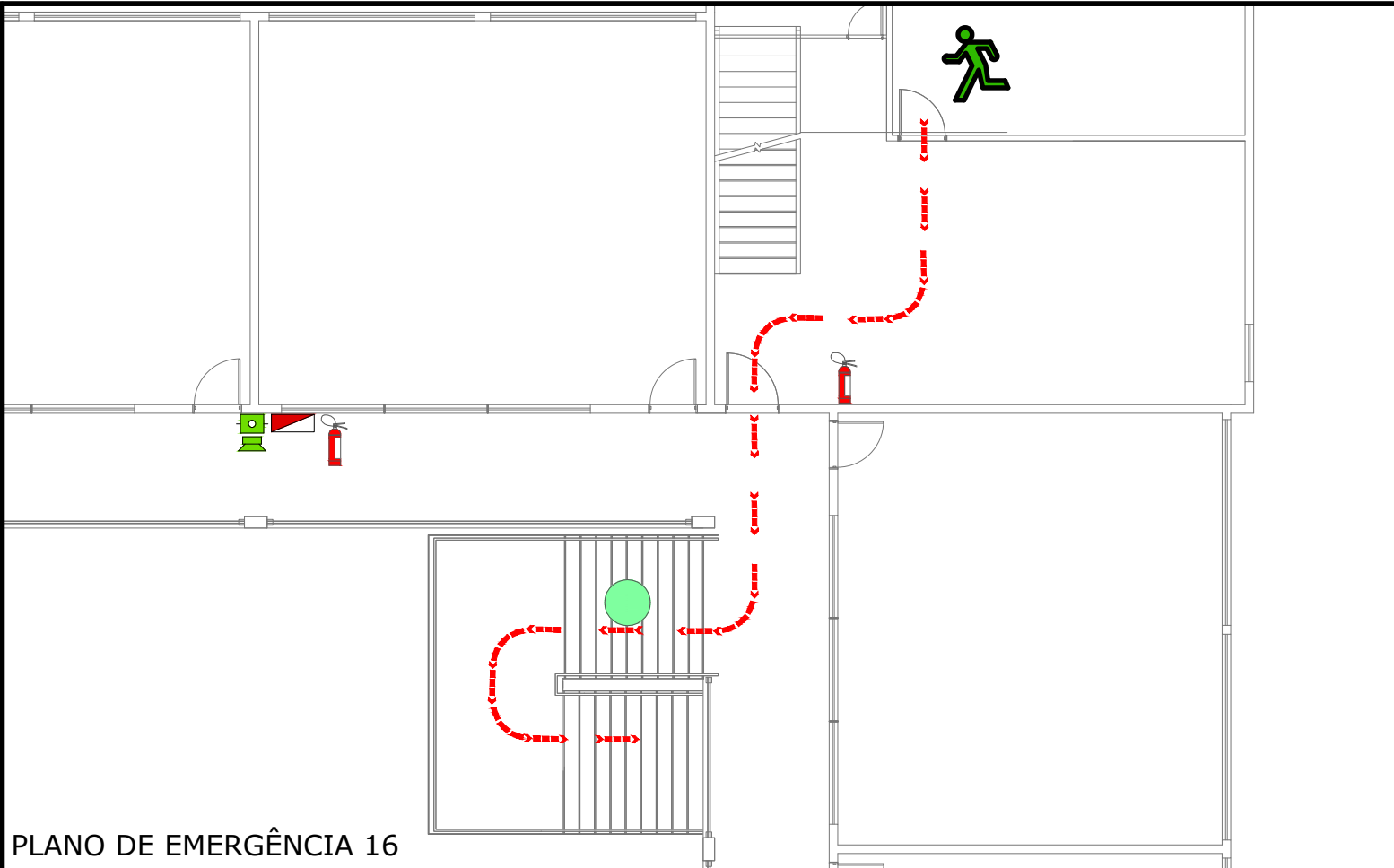
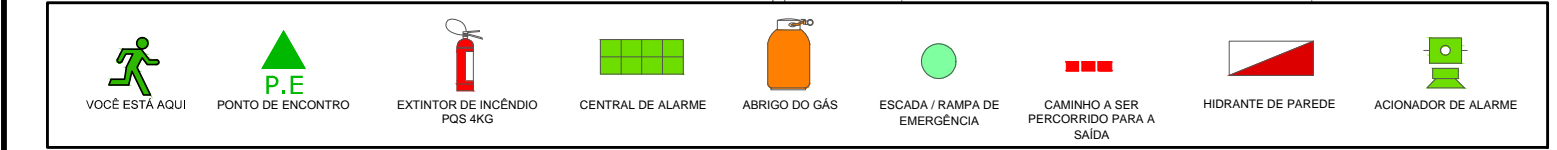
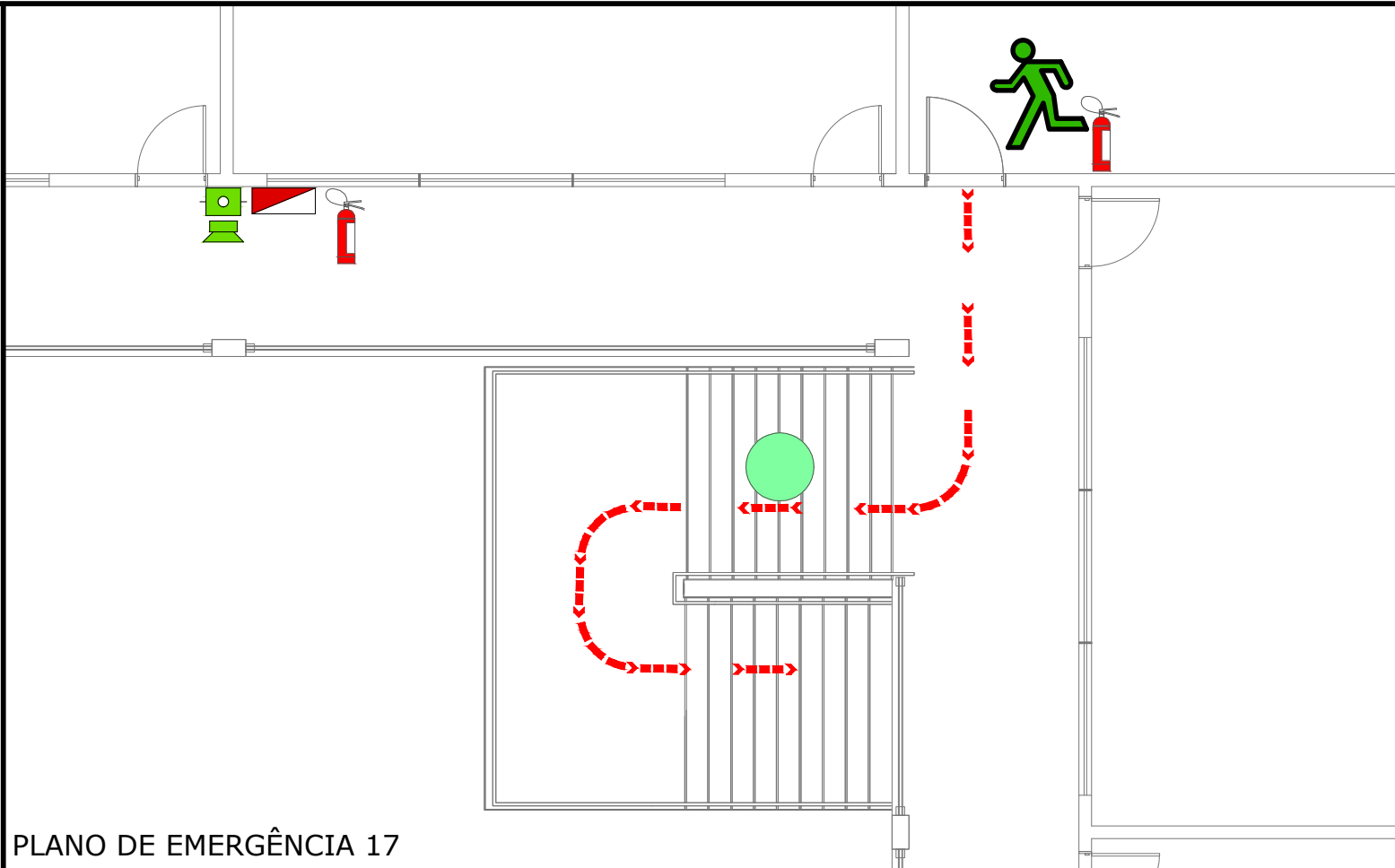
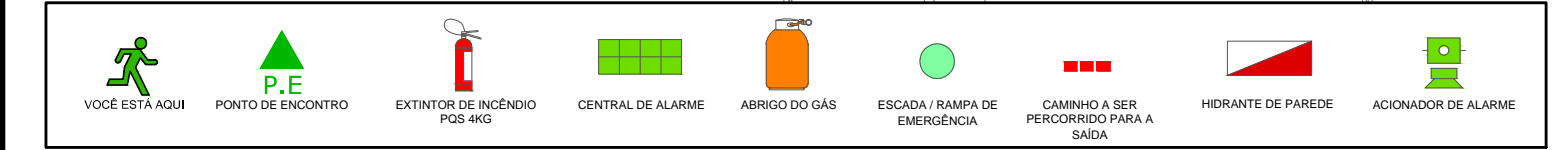


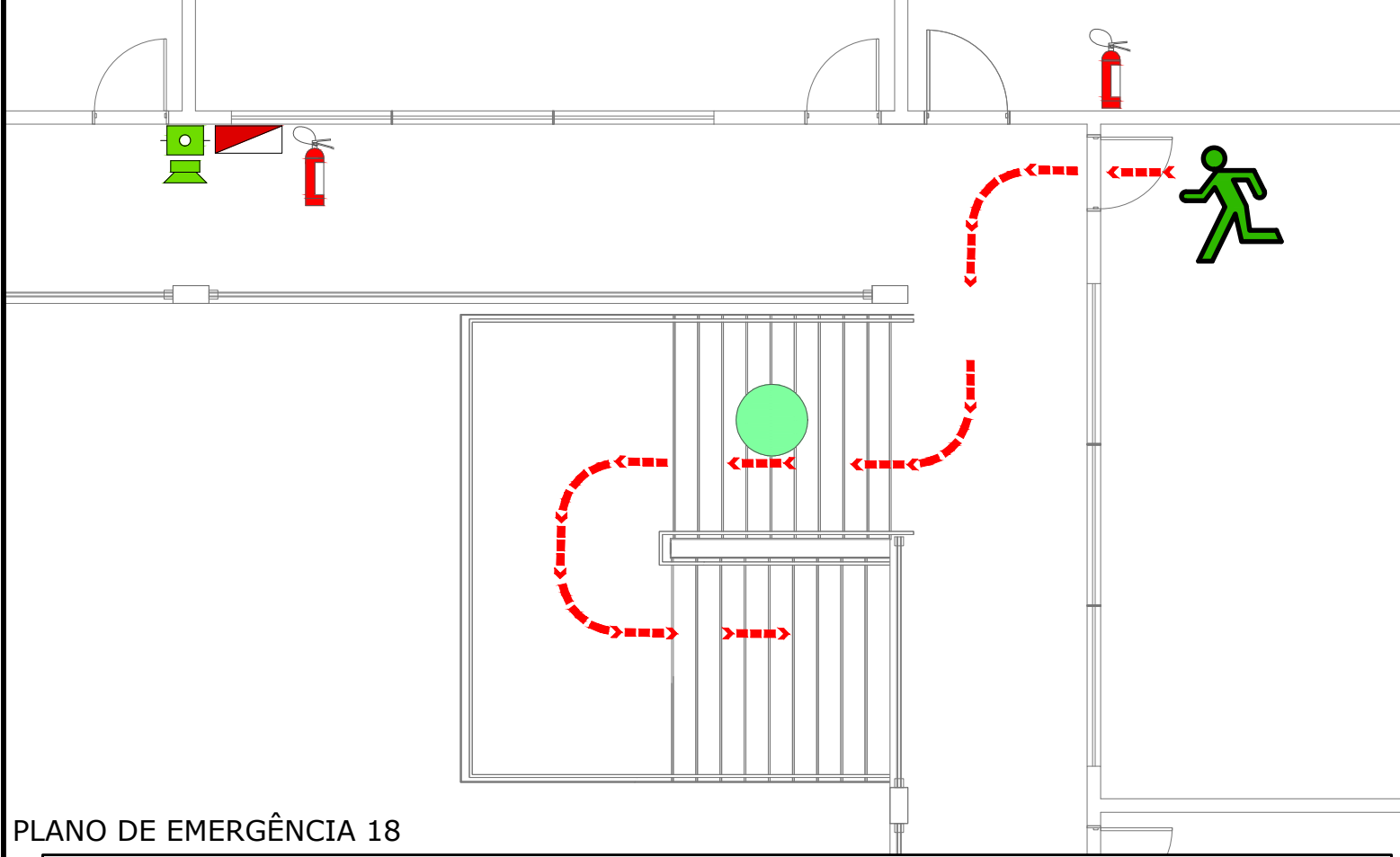
PLANO DE EMERGÊNCIA 15



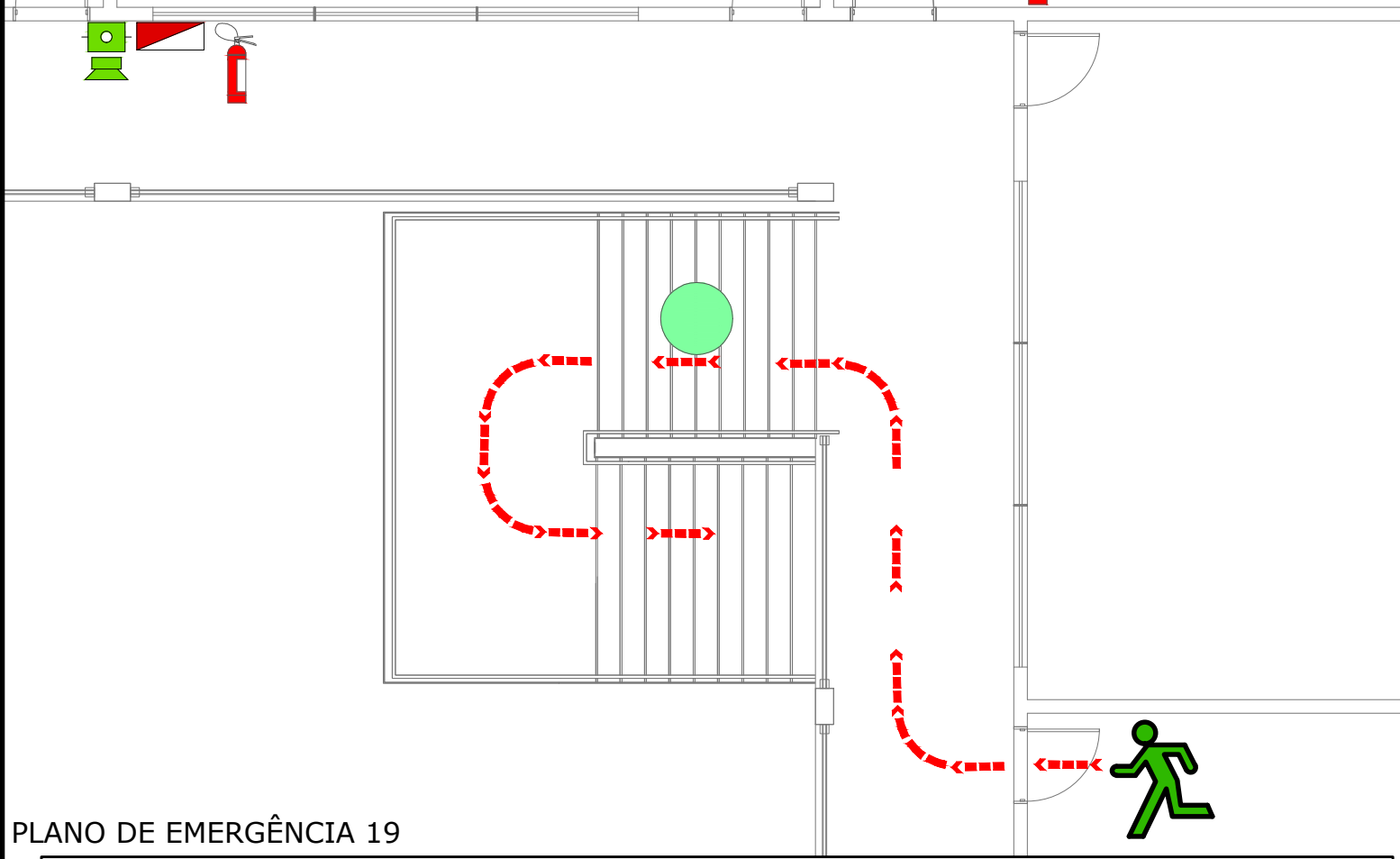
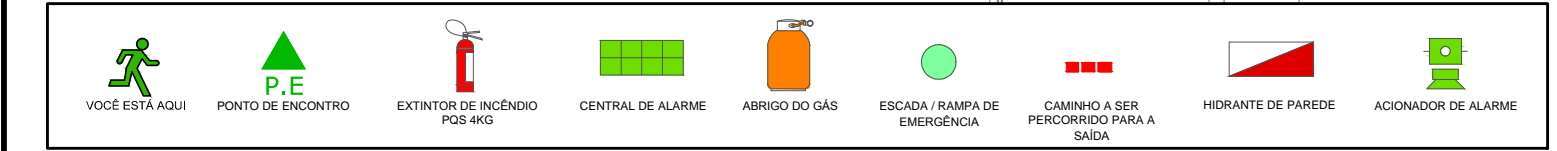
PLANO DE EMERGÊNCIA 16



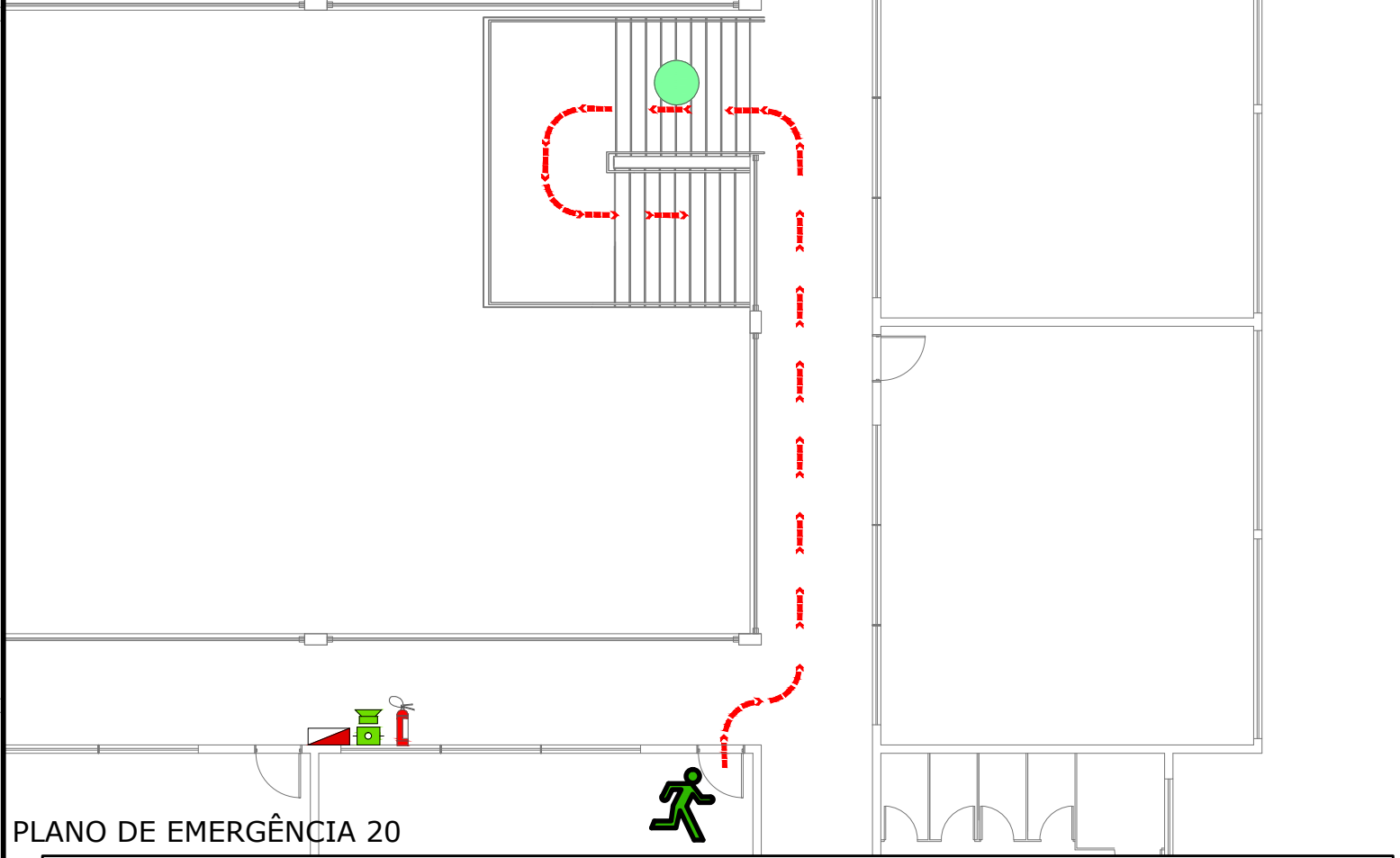
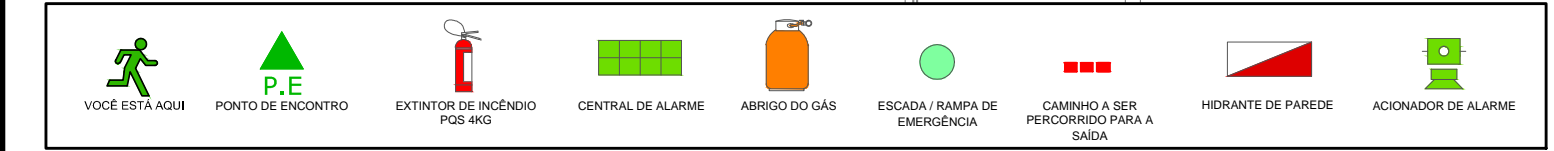
PLANO DE EMERGÊNCIA 17



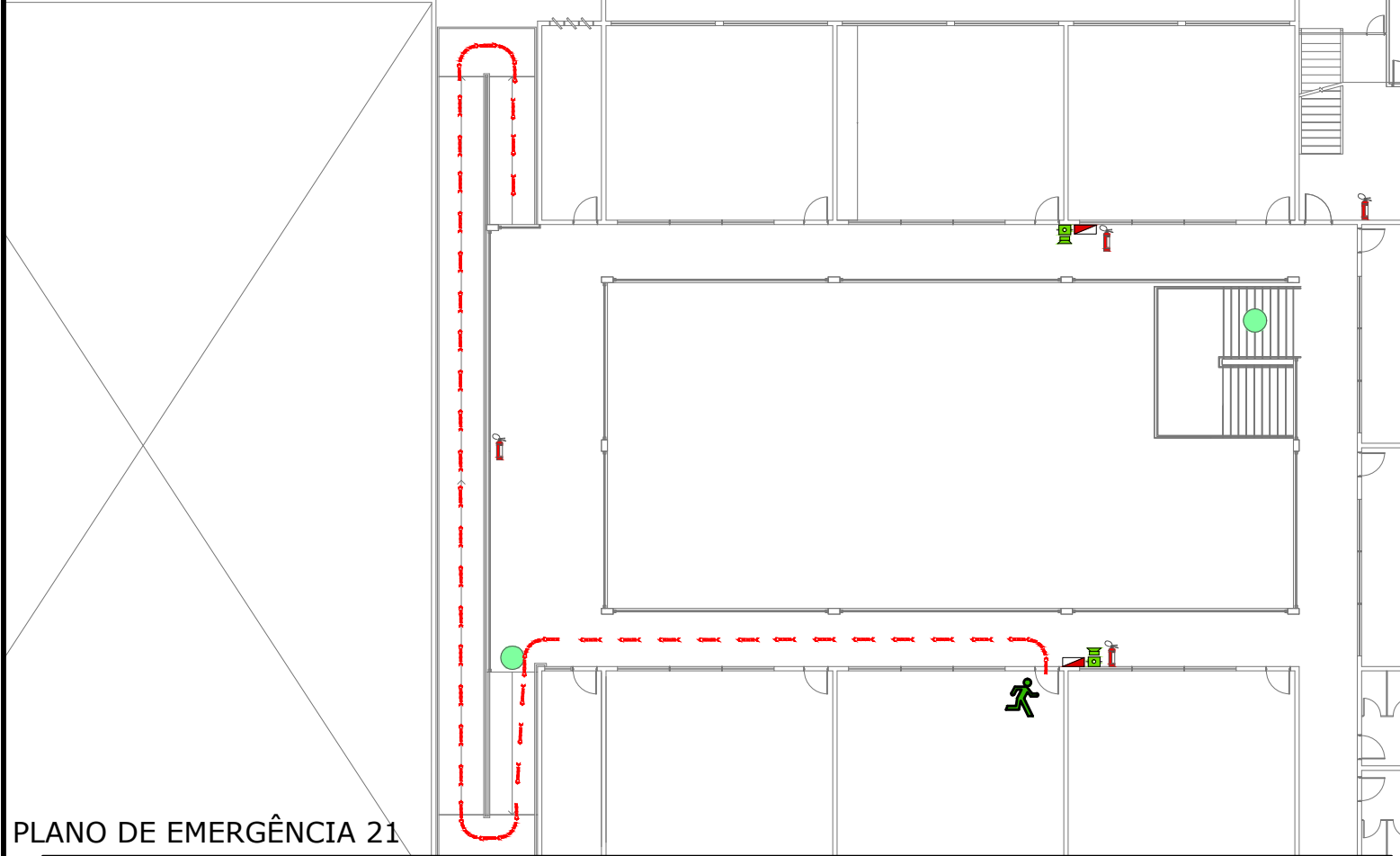
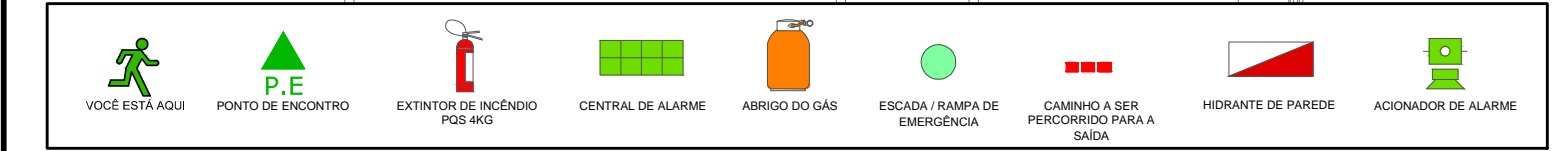
PLANO DE EMERGÊNCIA 18



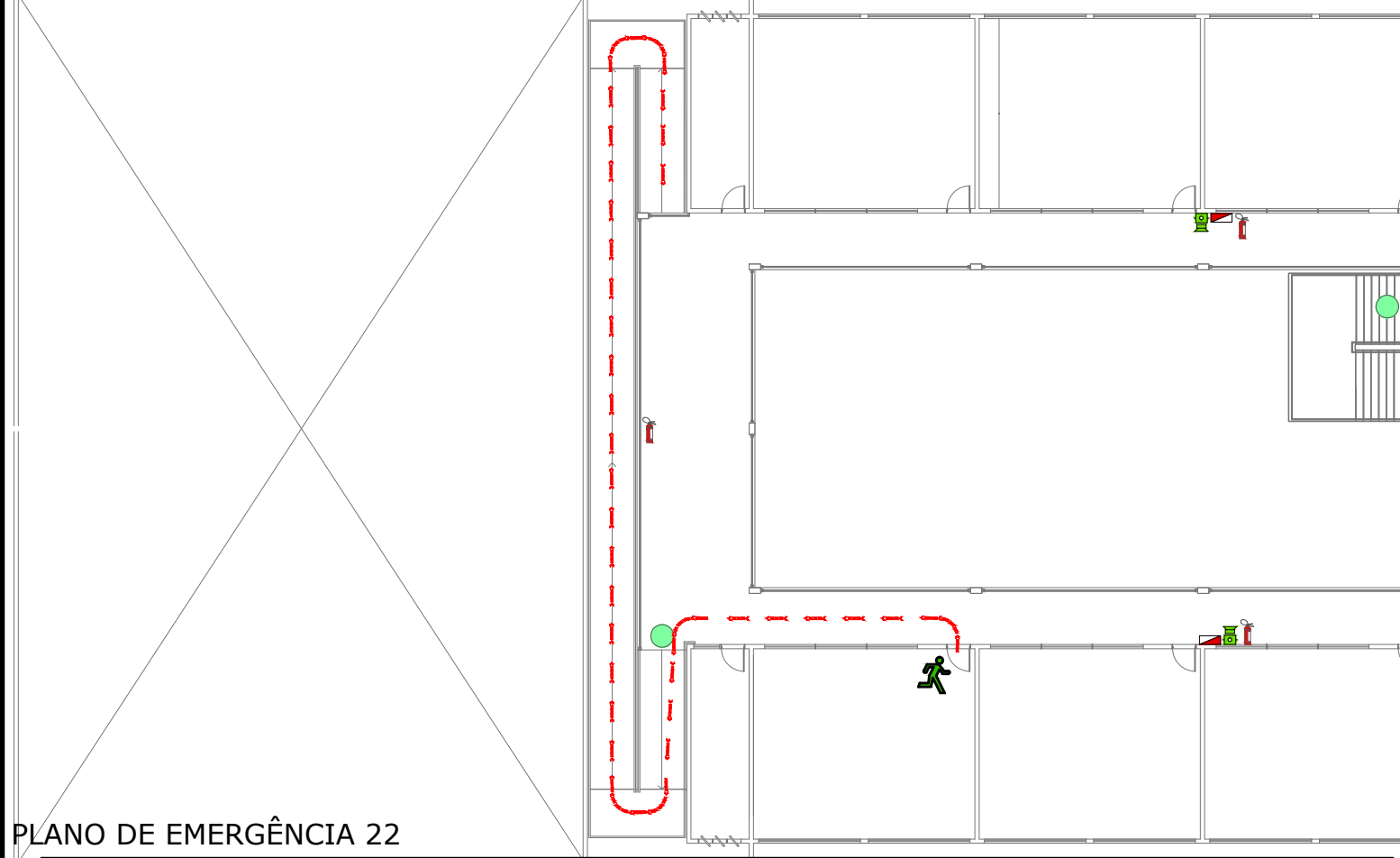
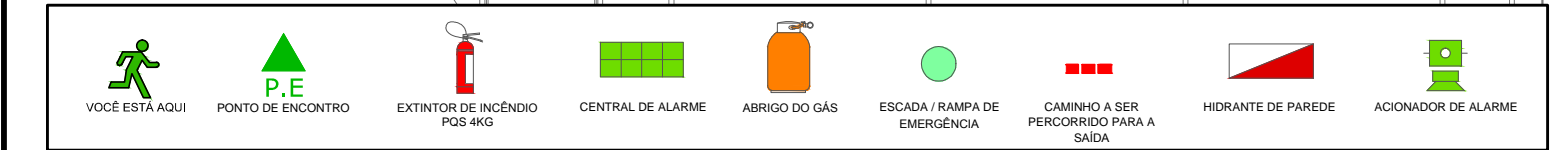
PLANO DE EMERGÊNCIA 19



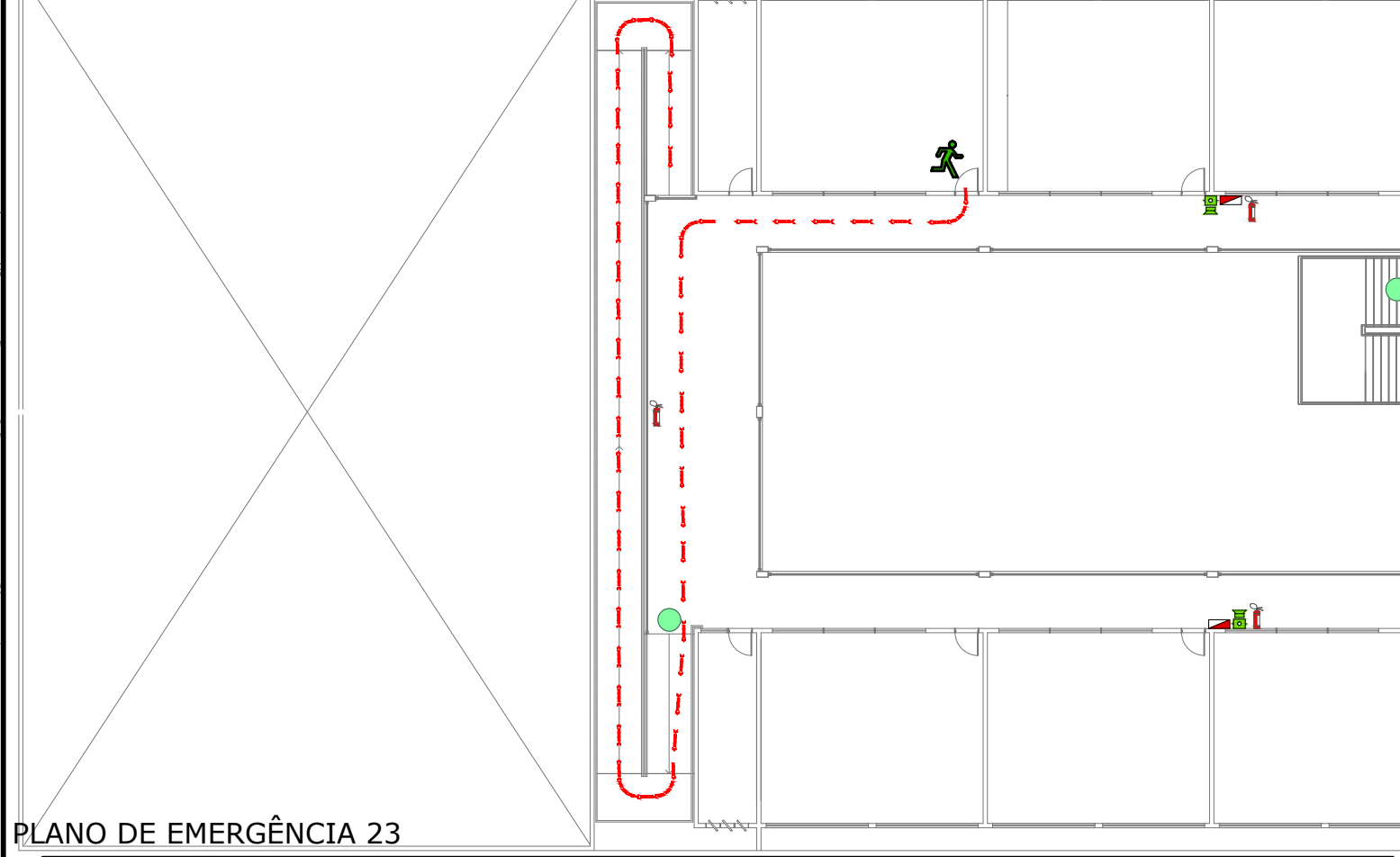
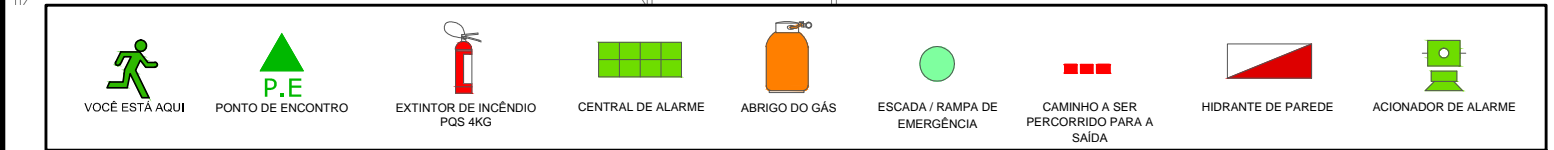
PLANO DE EMERGÊNCIA 20



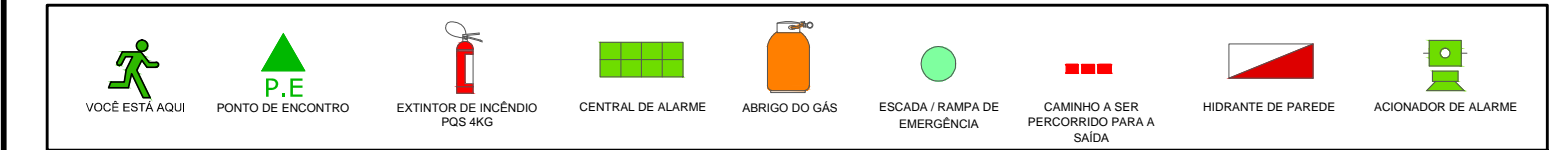
PLANO DE EMERGÊNCIA 21



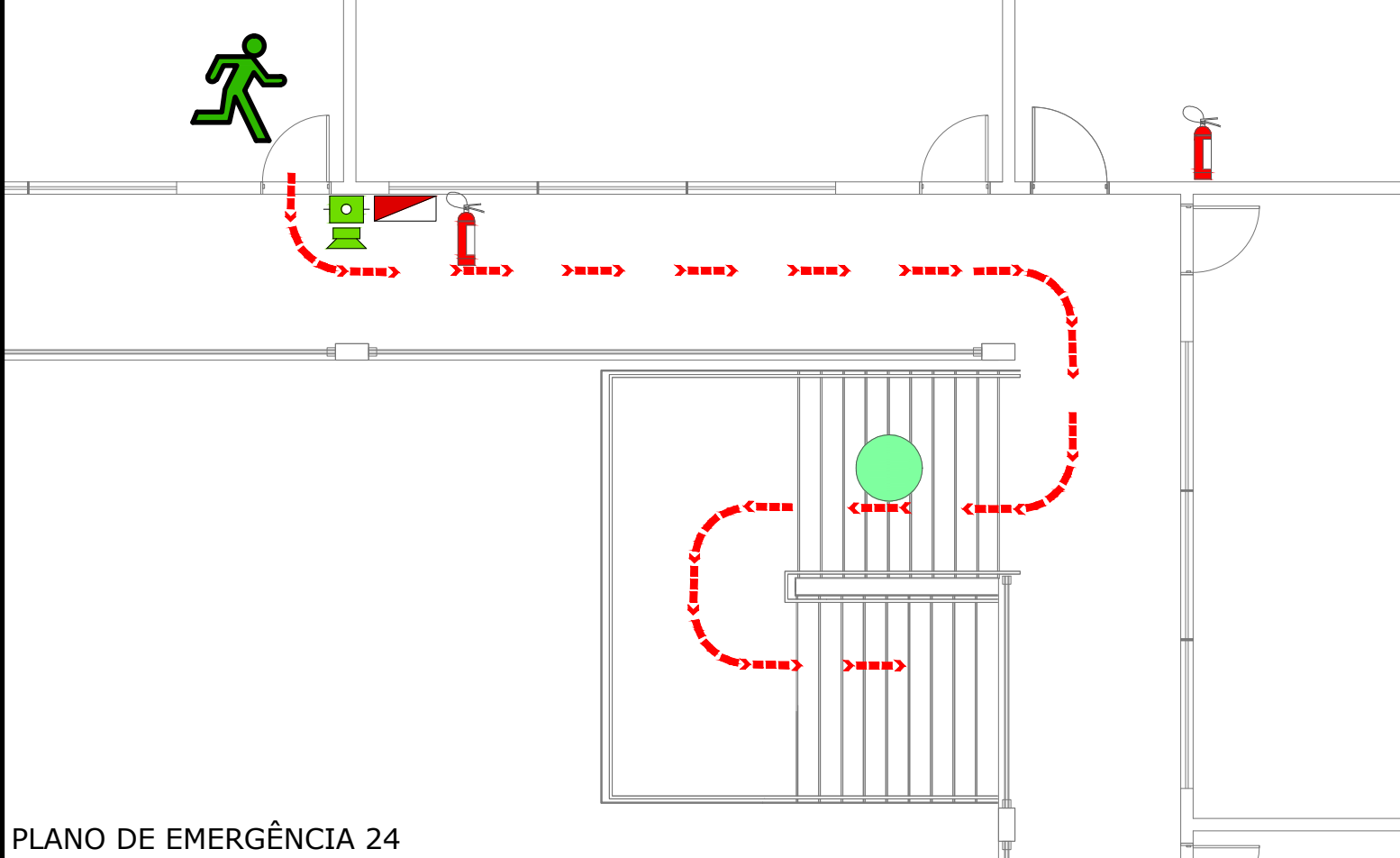
PLANO DE EMERGÊNCIA 22



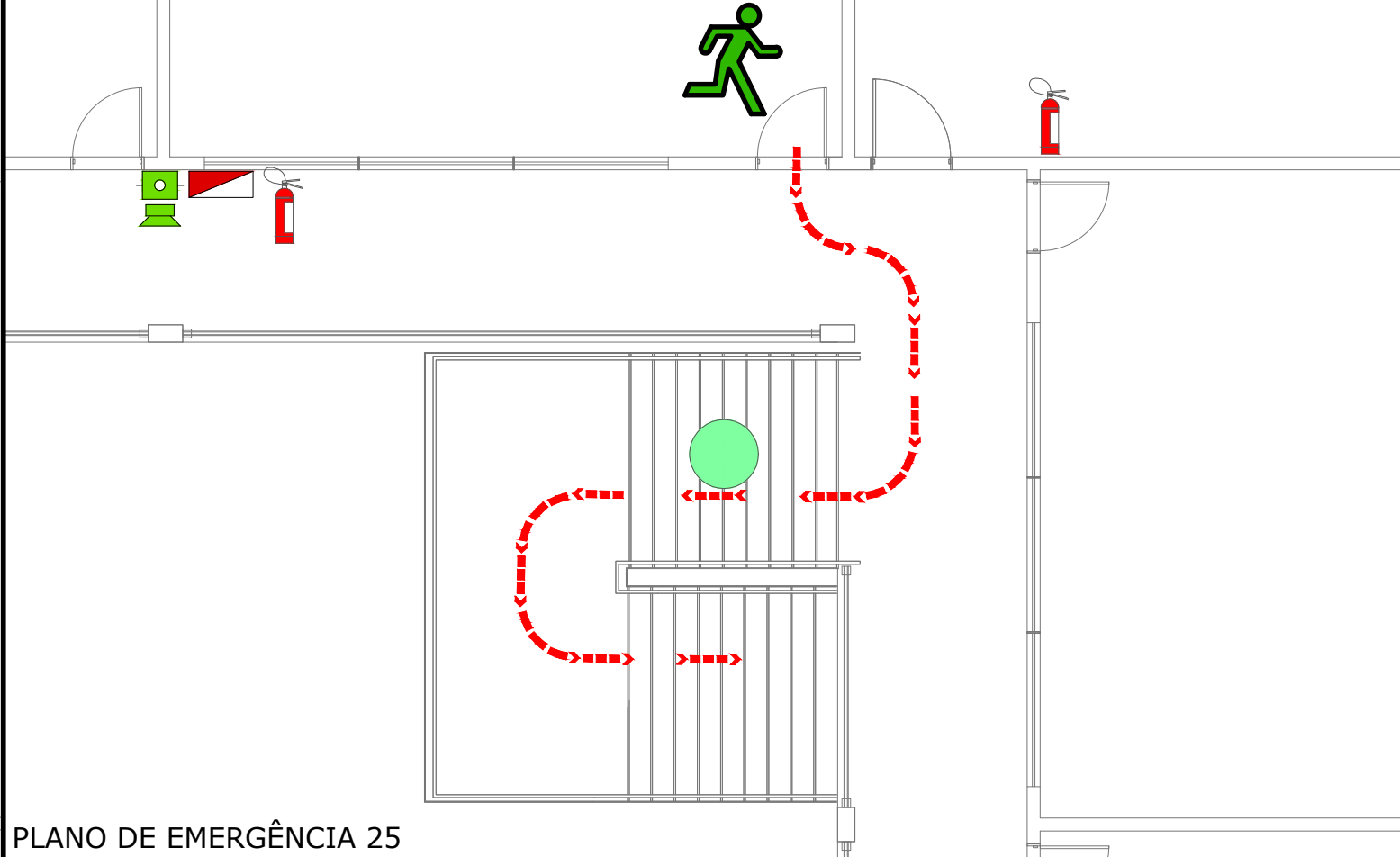
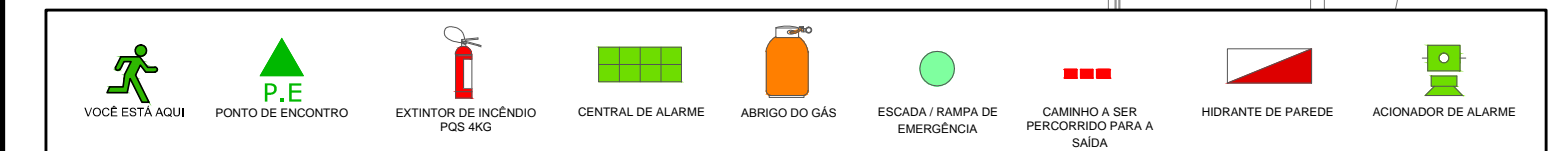
PLANO DE EMERGÊNCIA 23



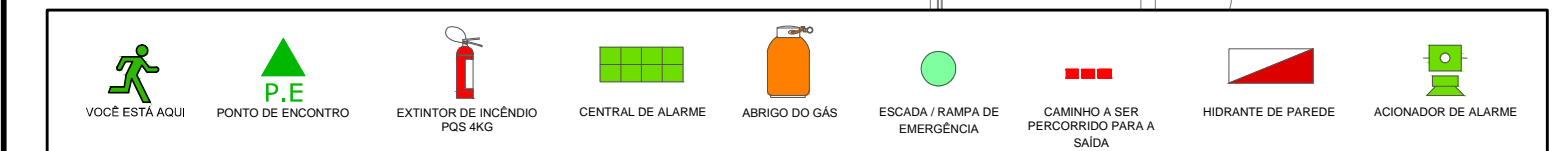
PLANO DE EMERGÊNCIA 24



PLANO DE EMERGÊNCIA 25



PLANO DE EMERGÊNCIA 26



QUADRO DE REVISÕES			
REVISÃO	DESCRIÇÃO	DATA	DESENHO
001	EMISSÃO INICIAL	07.10.15	ZANONAL

APROVAÇÕES		PCIPreventivo contra incêndio	
PROPRIETÁRIO	MUNICÍPIO DE ITAJAÍ CNPJ: 03.102.270/0001-02	RESPONSÁVEL TÉCNICO	ROBSON CARLOS SANTOS CREA/SC 062936-8
EDIFICAÇÃO	EDUCACIONAL   ESCOLA BÁSICA PROFESSORA MARIA JOSÉ HULSE PEIXOTO		
ENDEREÇO	RUA LIDIA PUEL PEIXER, 555 MURTA   ITAJAÍ/SC		
PROJETO	PREVENTIVO CONTRA INCÊNDIO	ARQUIVO	0510.PCI.PL.012.R00.PlanoEmergência3Pavimento
CONTEÚDO	PLANOS DE EMERGÊNCIA   TERCEIRO PAVIMENTO	ETAPA	LEGAL
		FOLHA	LEGAL
		ESCALA	INDICADA
			PCI-012
MAGNUS PROJETOS CONSTRUÇÕES E REPRESENTAÇÕES COMERCIAIS LTDA   CREA 088683-1   CAU 181198-6   CNPJ 09.549.705/0001-37 Rua Lauro Müller, 853   Sala 02 - Fazenda   CEP 88301-401 - ITAJAÍ/SC   Fone: (47) 3349-9330 / 3348-5561   magnus@magnusengenharia.com.br			